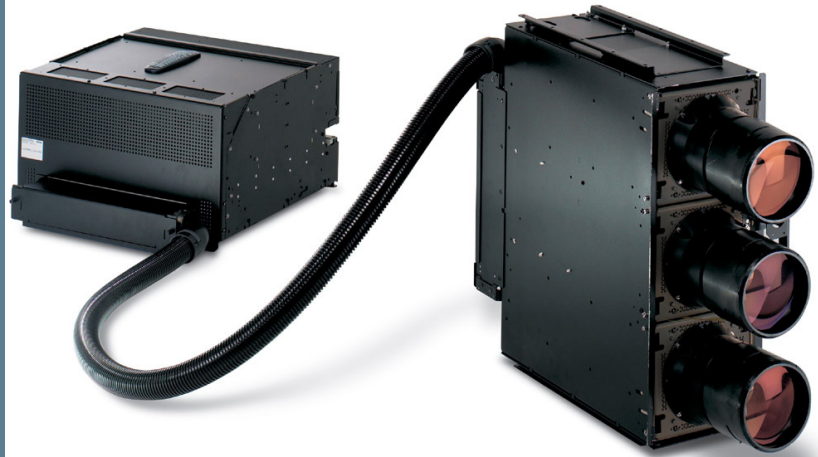


BarcoReality 908 Split Pack

8" CRT projector designed to meet limited-space requirements for immersive Simulation and V&AR display applications



Leading-edge technology in a rugged design for optimal flexibility in demanding limited-space applications.

This product range combines outstanding light output with exceptional contrast and rich true color images for high performance visualization e.g. in shipbridge, flight and driving simulators.

Optimal Flexibility and Optimal Accessibility in Difficult Environments

The head of the projector can be placed 6.5 feet from the electronics chassis. Installations on motion-base platforms can have a lower center of gravity and the systems can be assembled in vertical array.

Rugged Design

- Shock-resistant and vibration-proof mounting systems for motion platforms are available on request
- The design relieves stress from cables to chassis
- Certified connectors ensure optimal contact
- Certification: CE, UL1950 (USA), EN60950

High Quality Multiple Screen Images

- Through Barco's Contrast Modulation, Soft Edge Matching and Convergence on Green, overlapping zones are completely phased out in multiple screen applications.
- TSND 6-pole focus astigmatism correction for superb focus quality across the entire projected image.
- Digital Auto-Image automatically aligns all geometry and convergence parameters.
- Built-in Scheimpflug optical correction, with stepless adjustment, for optimal optical focus for off-axis projection (optimal focus under non-standard angles).

Automatic Alignment

Optional Built-in Auto-Image Digital Auto-convergence and Auto-Geometry

BARCO

Visibly yours

Technische Daten

Auflösung	10 Line pairs/mm optical 1600 x 1250 ANSI pixels
Optiken	Standard: High definition hybrid F1.1 color corrected short throw liquid coupled lenses Optional: Air coupled F1.1 lenses delivering a higher light output
Lichtstrom	With standard high definition hybrid F1.1 lens: <ul style="list-style-type: none"> • Boost mode: 180 lumens • Normal mode: 150 lumens • Economy mode: 120 lumens 10% full white, 1,100 lumens With optional air coupled F1.1 lens: <ul style="list-style-type: none"> • Boost mode: 250 lumens • Normal mode: 210 lumens • Economy mode: 180 lumens 10% full white, 1,250 lumens
Frequenzen	Horizontal: 30-180 KHz Vertical: 37-240 Hz
Minimale Rücklaufzeit	Horizontal: <1.1 μ s in range 90-180 KHz <1.8 μ s in range 30-130 KHz switching point adjustable between 90 and 130 KHz Vertical: <200 μ s
Max. Adressiermöglichkeiten	3200 x 2560 pixels
RGB-Bandbreite	180 Mhz
Horizontale Linearität	< \pm 0.25% distortion @ 1280 x 1024, 60 Hz with convergence on green option < \pm 1.5% distortion throughout the full horizontal frequency range
Eingänge	<ul style="list-style-type: none"> • RGB input on 5 BNC connectors, with automatic sync detection and sync polarity, with sync on green or separate sync • Second RGB analog input on D15-connector, with automatic sync detection and polarity
Leistung	Power factor corrected ranging between 100 and 240 VAC +6%/-10%
Leistungsaufnahme	800 W max.