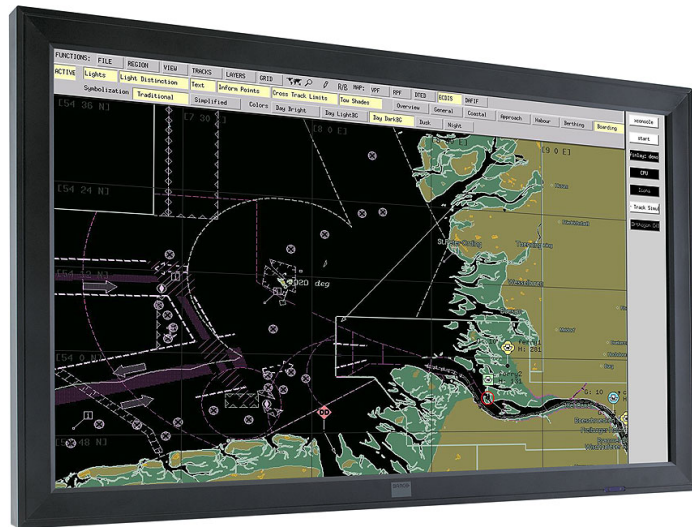


HD-47

47" native high-definition LCD display



The Barco LC-47 LCD displays have been specifically designed for use in dedicated professional applications. They feature full High Definition (**1920 x 1080 pixels**) and deliver crisp, clear and color-accurate perfect images on large display sizes with 47" diagonal.

The LCD technology used in the Barco LC-47 offers many benefits not found in other flat panel technologies:

- High brightness
- High contrast, even in high ambient light environments
- Ultra high native resolution (1920 x 1080 pixels)
- Fanless design (low noise)
- Frame lock
- Accepts 1080p signals
- Low power consumption
- Long lifetime

For use in control rooms, boardrooms and meeting rooms, the native 1920 x 1080 pixel resolution stands for the ultimate in detail.

For TV studios the adjustable color temperature setting enables the user to maintain perfect color balance under all studio lighting conditions. The fanless design keeps the background noise below the audible noise level.

In boardrooms and various meeting environments large amounts of information can be presented in a dynamic way with the simultaneous display of a second source as a Picture-in- Picture (PIP) or Picture-and-Picture (PAP).

In lobbies and public address environments the loop-through functionality allows the LCD displays to be controlled from a single location.

BARCO

Visibly yours

Technische Daten

Technologie	TFT LCD
Auflösung	1920x1080 (full HD)
Lebensdauer	50,000h average
Farben	16.8 million
Farbskala	76% NTSC
Seitenverhältnis	16:9
Betrachtungswinkel	176°/176°
Ansprechzeit	8 ms
Farbanpassung	3200K, 5400K, 6500K, 9300K, User (R,G,B sliders)
Kontrast	800:1
Helligkeit	500cd/m ²
Lichtsensoren	Ambient light sensor for automatic dimming
Standard-Eingänge	DVI, VGA (D15), S-Video, Composite Video, Component video (YPbPr, YCbCr)
Optionale Eingänge	External converter HD-SDI/SDI to DVI-D. Inputs: SMPTE-259M-C, SMPTE-292M
Unterstützte Auflösungen	On composite, S-video and component inputs: PAL-Secam 576i, NTSC 480i On DVI and VGA inputs: VESA: VGA, SVGA, XGA, WXGA, SXGA, SXGA+, UXGA; SMPTE-296M(1280 x 720p); SMPTE-274M (1920 x 1080i and 1920 x 1080p)
Bedienung	- RS232 control (with loop-through) - On Screen Display (OSD) - IR remote control
Audio	Audio pré-amp input module (excl. speakers)
Bild-im-Bild	PIP source max. 110 MHz
Eingang	85V-264V (50Hz-60Hz)
Leistungsaufnahme	303W
Betriebstemperatur	5° to 40°C (41° to 104°F)
Luftfeuchtigkeit	Max. 85%
Konformität	CE, UL, FCC, TÜV
Kühlung	Low noise level 21 dB(A) / fanless cooling
Diagonale der aktiven Bildschirmfläche	47" (1,194 mm)
Aktive Bildschirmfläche	1,044 x 590 mm (41.1" x 23.2")
Abmessungen	1,139 x 684 x 126 mm (44.84" x 26.93" x 4.96")
Gewicht	40.2 kg (88 lbs)
Befestigung	VESA MIS F, 600, 200, 8 (mounts and table stands are optional)
Gewährleistung	Warranty of the Product is two years. Image retention resulting from prolonged continuous use of the Product is not covered by warranty

Generiert am: Saturday, May 26, 2012
 Die angegebenen Informationen und Daten sind typisch für das beschriebene Gerät.
 Jede Spezifikation kann sich aber ohne vorherige Ankündigung ändern.
 Die aktuelle Version dieser Broschüre finden Sie unter www.barco.com.

BARCO

Visibly yours