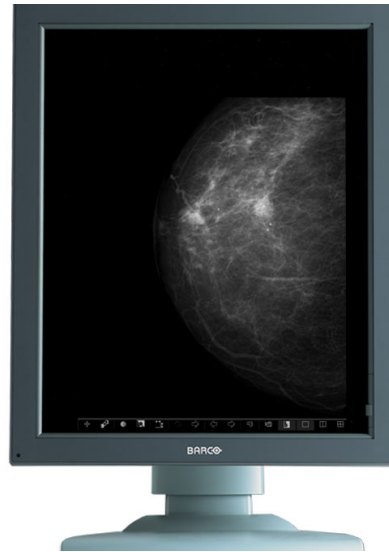


# Coronis 5MP Mammo (MFGD-5621HD)

The standard of care for digital mammography



The Coronis 5MP Mammo display system for digital mammography proves that technology can make a real difference.

#### **Pixel-perfect mammography reading**

Equipped with top-of-the-line LCD technology, the system offers radiologists highly accurate grayscale images with high resolution, high contrast and perfect geometry. Innovative technology, such as 'Per Pixel Uniformity', ensures pixel-perfect images, without disturbing screen-noise, which might hide subtle details.

#### **Ultimate grayscale accuracy**

The 12-bit DICOM look-up table produces 1024 simultaneous shades of gray. This provides radiologists with a higher level of diagnostic precision, making it possible to detect the most subtle of details in digital mammography images.

#### **Lasting precision**

Thanks to the DuraLight backlight technology, Coronis 5MP Mammo has a lifetime that is 3 to 5 times longer than conventional displays.

#### **The preferred choice for digital mammography**

These benchmark technologies have made Coronis 5MP Mammo the preferred choice for training and screening centers worldwide.

#### **The Coronis 5MP Mammo display system includes:**

- One or more 5 MegaPixel flat panel displays
- MediCal QAWeb software for automated calibration and Quality Assurance
- A high-speed, high-performance display controller: check the compatibility matrix

**BARCO**

Visibly yours

# Technische Daten

<b>Technologie</b>	TFT AM LCD dual domain IPS grayscale, 3 subpixels per pixel
<b>Pixel-Pitch</b>	0.165 mm (0.0065")
<b>Diagonale der aktiven Bildschirmfläche</b>	540.9 mm (21.3")
<b>Aktive Bildschirmbreite</b>	337.9 mm (13.3")
<b>Aktive Bildschirmhöhe</b>	422.4 mm (16.6")
<b>Farb-Bildgebung</b>	No
<b>Graustufen-Bildgebung</b>	True
<b>Auflösung</b>	5MP (2048 x 2560)
<b>Leuchtdichte</b>	> 800 cd/m <sup>2</sup> (233.5 fL) Max. 600 cd/m <sup>2</sup> (175.13 fL) DICOM calibrated
<b>Kontrast</b>	900:1 (typ.)
<b>Betrachtungswinkel</b>	176° (at 10:1 contrast)
<b>Video-Eingänge</b>	2 x DVI
<b>Bildstabilisierung</b>	embedded I-Guard
<b>Abmessungen</b>	Portrait (W x H x D): 408 x 592 x 217 mm (16.1 x 23.3 x 8.5")
<b>Gewicht</b>	13.5 kg (29.7 lbs)
<b>Leistungsaufnahme</b>	100 W max.
<b>Zulassungen</b>	CE, CCC, KETI, UL60601-1, EN 55022 LIMIT B, FCC class B, EN 61000-3-2
<b>Betriebstemperatur</b>	0° to +40°C (32° to 104°F)
<b>Innerhalb der technischen Daten</b>	+15° to +35°C (59° to 95°F)

Generiert am: Saturday, May 26, 2012  
Die angegebenen Informationen und Daten sind typisch für das beschriebene Gerät.  
Jede Spezifikation kann sich aber ohne vorherige Ankündigung ändern.  
Die aktuelle Version dieser Broschüre finden Sie unter [www.barco.com](http://www.barco.com).

**BARCO**

Visibly yours