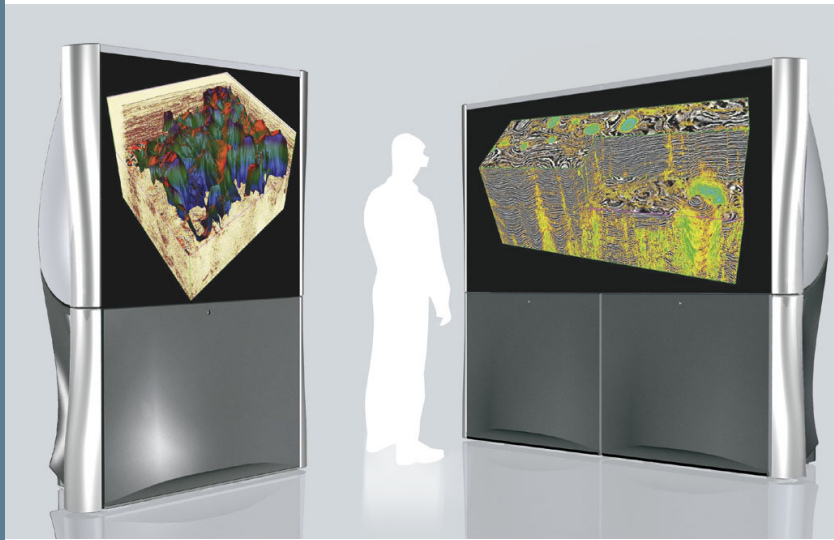


TRACE

Team Room Application Collaborative Environment



The Barco Trace offers the most advanced state-of-the-art technology available today for team collaboration to visualize, analyze and explore complex data.

- **Plug & Play Virtual Environment**
- **Team room Collaboration**
- **High-end functionality, Scalable**
- **3D Active Stereo**
- **No room modifications or build-out**

Today more and more companies want to visualize their **complex data in a collaborative manner**. Usually small teams from the same or from different departments gather in conference rooms or high-end visualization rooms to share information and evaluate data.

With the Barco TRACE, Barco offers a revolutionary tool that will not only have the **functionality of high-end visualization rooms**, but will also fit through a normal door opening without requiring any room modifications or build-out. It will enable teams to visualize data in a well-lit room, allowing for better eye-to-eye collaboration.

Active 3D stereo display enhances intuitive understanding and accurate analysis of the complex data. Real time interaction with the data leads to quick team decision-making. In addition, the Barco TRACE is scalable from a **one channel to multi-channel configuration**. Options such as complex source switching with touch panel, and tracking can be added.

The Barco TRACE provides a virtual reality environment that has high-end functionality, is compact, transportable and scalable.

Applications

- Oil & Gas Exploration & Production
- Engineering design
- Video Conferencing, Real-Time Collaboration
- Immersive Training and Simulation
- Any application requiring the visualization of complex data sets or vast amounts of

BARCO

Visibly yours

Technische Daten

Stromversorgung	110V (tolerance 100V-255V) per channel
Leistungsaufnahme	1200 Watts per channel
Wärmeabgabe	4100 BTU/Hr per channel
Gewicht	180 kg / 396 lbs per channel
Abmessungen	per channel: width: 1390 mm / 54.7 height: 2050 mm / 80.7 inch depth: 760 mm / 29.9 inch