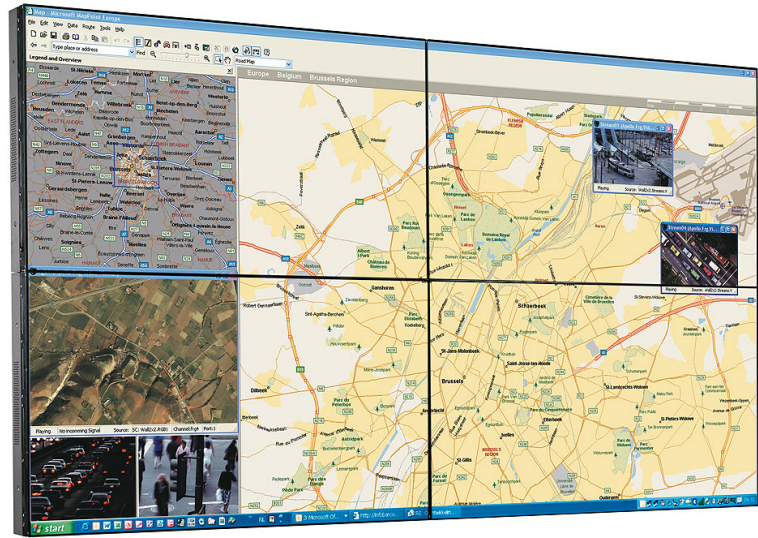


NSL-4601

46" WXGA narrow-bezel LCD for video wall applications



The NSL-4601 is a professional grade, narrow-bezel 46" LCD display with WXGA resolution, which has been designed for tiled video wall applications in small to medium-sized control rooms. As a tiled LCD solution the NSL-4601 is ideal for Emergency Operations Centers, traffic and surveillance centers, and utilities and process control rooms.

Multiple sources, native resolution

In combination with a Barco display controller, the NSL-4601 allows to present sources in native resolution without loss of content, or scaled. Multiple sources (video, PC content or streaming video) can be presented and positioned anywhere across the entire LCD stack.

Stable colors

The NSL-4601 can be calibrated by means of Barco's display consistency management software. This ensures a correct white point and accurate grayscale.

Space-saving

Barco's NSL-4601 video walls can be serviced from the front and the back. They require no back room space at all, so they are ideally suited for control rooms where space is limited. The high resolution of the tiled NSL-4601 video wall allows operators to sit close by and monitor high-density information.

Tiled LCD technology - the right choice for your control room:

- Unlike plasma technology, tiled LCDs require less power consumption and are not subject to permanent, irreversible burn-in.
- Unlike larger-area LCD displays, tiled LCDs offer more flexibility, scalability and the possibility for a higher resolution.

BARCO

Visibly yours

Technical specifications

Display technology	<ul style="list-style-type: none"> • Direct view LCD • SPVA, normally black • DID technology for extensive usage (No permanent burn in for use under 20 hours/day) • AIR Anti Image Retention circuitry
Resolution	WXGA (1366 x 768px)
Absolute resolution	35 dpi
Brightness	500 Cd/m ² (typ.) 700 Cd/m ² (max)
Viewing angle	H 178° V 178°
Contrast	3000:1 (typ.)
Color	10 bit color resolution - 1.07 B colors
Response time	8 ms
Calibration	Color calibration: Full compatibility with Barco DCMS color sensor for automated color calibration Precision: Internal 10 bit processing for precise color calibration
Light source	<ul style="list-style-type: none"> • Backlight • White point: 10,000 K (Other color temperatures are possible) • Dimming range: > 3
Light source lifetime	50,000 hours
Screen gap	< 6.7 mm 0.264"
Dimensions	<ul style="list-style-type: none"> • Diagonal: 46" (nom.) • Width: 1026.1 mm 40.4" • Height: 580.2 mm 22.8" • Depth: 98 mm 4.0" • Actual on screen width: 1019 mm 40.1" • Actual on screen height: 573.1 mm 22.6" • Bezel width: Right, bottom: < 2.4 mm (right, bottom): left, top: < 4.3 mm (left, top) • Weight: 29.8 kg 65.7 lbs (net), 35.2 kg 77.6 lbs (gross)
Power	AC input voltage: 100-240 VAC, 60-50 Hz Power (W): 300 Heat dissipation (BTU/h): 1020
Inputs and outputs	<ul style="list-style-type: none"> • Pixelclock: 25.2 MHz - 165 MHz • Horizontal range: 30.0-68.0 KHz Vertical range • 50-60Hz • Connector: DSUB-15P in/out, DVI-D in/out • Sync: Separate VGA/DVI • Connector: DSUB-15P in/out, DVI-D in/out • Sync: Separate • Resolution: 640x480-60, 800x600-60, 1024x768-60, 1280x1024-60, 1360x 768-60, 480p, 720p-60, 1080i-30, 1080p-60, 576p, 720p-50, 1080i-25, 1080p-50 Component • Connector: BNC in/out • Resolution: 480i, 480p, 720p-60, 1080i - 60, 1080p - 60, 576i, 576p, 720p-50, 1080i-25, 1080p-50 S-video • Connector: S-terminal in/out • Color System: PAL/NTSC CVBS • Connector: BNC in/out • Color System: PAL/NTSC
Wall control	Barco NSL control manager: Remote wall application: on/off, wall setup, source selection, status, manual brightness, contrast and color adjustment Control Signal: RS-232 DSUB9 PIN in/Out (via DVI cable)

Environmental	Operational temperature 5-40°C Operational humidity 20-80% non-condensing Storage temperature: 20-60°C Storage humidity: 10-90% non-condensing Noise level: 25dB(A) (measured in front at 5m)
Certifications	- ROHS - CE, TUV, cTUVus, CCC
Warranty	3 years