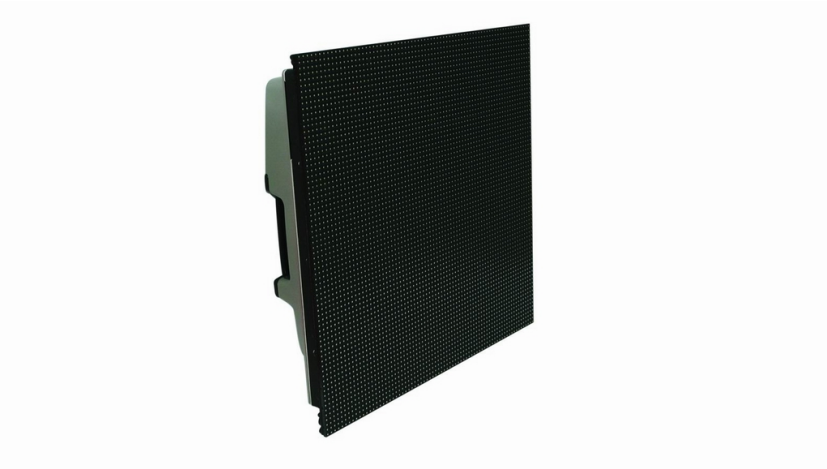


ILite 6 BK

6mm pixel pitch, 2,000 nits surface-mounted LED tile



At one of the most attractive price-performance ratios, Barco's ILite 6 BK is the smart choice for events and indoor installations that require a modular, slim LED solution that has proven its worth. It is easily and quickly serviceable, and has the technology to make sure that your overall image consistency remains excellent, even when tiles are added to or removed from the display.

BARCO

Visibly yours

Technical specifications

| | |
|-------------------------------------|--|
| Pixel pitch | 6.22 mm |
| Brightness | 2,000 nits |
| LED configuration | 3-in-1 SMD |
| Pixel density | 25,829/sqm 2,402/sqf 5,184/tile (72x72) |
| Hor. viewing angle | 120° (min 50% brightness) |
| Vert. viewing angle | +60, -60° (min 50% brightness) |
| Contrast ratio | 3,000:1 (at 500 lux) |
| Lifetime | 45,000 hours to 50% of initial brightness |
| Power consumption | 335 W/tile (max) 156 W average |
| Operation power voltage | 200-240V / 50-60Hz |
| Tile dimensions | Width: 448mm Height: 448mm Depth: 150mm |
| Weight / Tile | 14.3 kg |
| IP rating | Indoor use only |
| Processing | 14 bit/color |
| Colors | 4.4 trillion |
| Refresh rate | 400Hz |
| Foot build-up | Max. 12 tiles high |
| Truss build-up | Max. 15 tiles high |
| Link interface | DVI interface (DVI connector) |
| Max link length | 4.5m (with Barco DVI cable) |
| Interfaces | 2x DVI link |
| Max power cascade connection | 6 tiles |
| Serviceability | Back |
| Operating temperature | 0-40°C |
| Storage temperature | -20 - 60°C |
| Operational humidity | 35-85% |
| Storage humidity | 10-90% |
| Source compatibility | CVBS, YC, YUV, RGB, DVI, SDI, HDS DI (with DX700: and Dual link DVI, Dual link HDS DI) |
| Operatable digitizer | DX-700 (with DVI output card), D320, LEDPRO |
| Certifications | CE classA, TUV, FCC, Class A, ETL, RoHS |