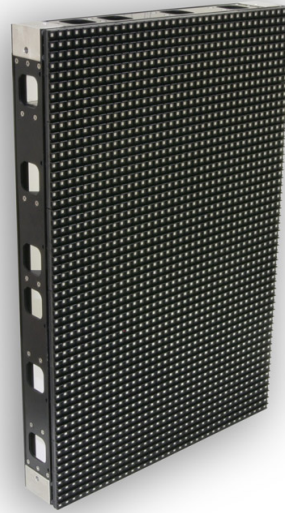


OLite 612 Fixed

Small pitch, surface-mounted creative LED tile



The new OLite 612 has a pixel pitch of 12mm and has increased brightness output of 6000Nits. It also incorporates a revolutionary new shader design which vastly improves the black levels of the display especially in broad daylight. When combined with the increased brightness, the OLite 612 delivers vastly improved contrast levels.

While the OLite 612 is suitable for use in both indoor and outdoor applications, its increased brightness and high contrast levels, would make it a preferred option for rental companies who have proportionately more outdoor work. The OLite 510, with its higher resolution and shorter shader design, is probably a better choice for those who have proportionately more indoor jobs.

OLite is also the first LED tile designed for creative applications as well as the classic IMAG (Image Magnification) applications. Each tile can be easily split up into small individual modules enabling creative display designs or any size and shape.

The combination of indoor/outdoor usage as well as conventional display and creative applications make OLite the most versatile LED display system on the market. The versatility enables you to achieve unprecedented return on investment as the OLite can be used in a wide range of applications and settings, indoor and outdoor.

The use of SMD technology enables wide viewing angles and superb uniformity at very short viewing distances. Add to this the high brightness, high resolution and superior color depth and uniformity (15 bit processing), IP65 rating and you will see that OLite represents a quantum leap forward in LED display technology!

BARCO

Visibly yours

Technical specifications

Pixel pitch	12.4 mm
Brightness	6,000 nits
LED configuration	3-in-1 SMD
Pixel density	3,888 LEDs per tile (72x54) (rental) 1,944 LEDs tile (36x54) (fixed)
Hor. viewing angle	110° (min 50% brightness)
Vert. viewing angle	+40, -50° (min 50% brightness)
Contrast ratio	1,150:1 (at 500 lux)
Lifetime	50,000 hours to 50% of initial brightness
Power consumption	800W/tile (max) - 240W average (rental) 400W/tile (max) - 120W average (fixed)
Operation power voltage	200-240V / 50-60Hz
Tile dimensions	Width: 896mm (rental) Height: 672mm (rental) Depth: 246mm (rental) Width: 448mm (fixed) Height: 672mm (fixed) Depth: 116mm (fixed)
Weight / Tile	58 kg (rental) 17 kg (fixed)
IP rating	IP65/65
Processing	16 bit/color
Colors	281 trillion
Refresh rate	800Hz
Foot build-up	Max. 12 tiles high
Truss build-up	Max. 15 tiles high
Link interface	DVI interface (DVI connector)
Max link length	4.5m (with Barco DVI cable)
Interfaces	2x DVI link
Max power cascade connection	3 tiles
Serviceability	Back
Operating temperature	-20 - 45°C
Storage temperature	-20 - 60°C
Operational humidity	10-99%
Storage humidity	10-99%
Source compatibility	CVBS, YC, YUV, RGB, DVI, SDI, HDSDI (DX700: and Dual link DVI, Dual link HDSDI)
Operatable digitizer	DX-700 (with DVI output card), D320, LED-PRO
Certifications	UL, CE class A, TUV, FCC, ClassA