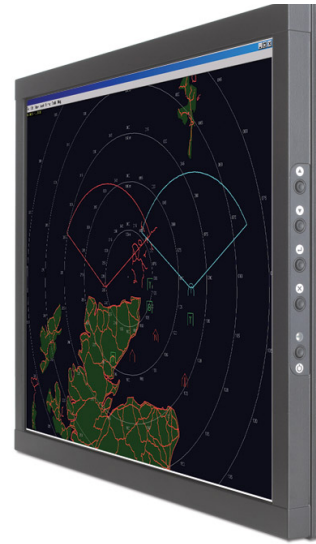


TL-248

19" Thin Lightweight display (1280 x 1024)



The TL-248 is Barco's 19" thin and lightweight display offering significant benefits with respect to dimensions, ruggedization and intelligence. The TL display family combines unmatched thinness with exceptionally low weight to provide a unique, rugged display solution, especially for applications where space and weight are critical.

The TL-248 features a first-class 19" Active Matrix Liquid Crystal Display offering excellent performance in terms of brightness, crispness, contrast and viewing angle. Several options and bezel configurations are available to address virtually any mounting need in any application. Additionally, the TL-248 combines this high level of performance and versatility with a very competitive price/performance value.

Barco's TL displays have been designed and qualified for application in the most hostile environments. Next to the standard ruggedization level, Barco offers its TL displays with two extra ruggedization levels, which are suited for specific naval combat, army and airborne applications.

BARCO

Visibly yours

Technical specifications

Panel size	19"			
Resolution	1280x1024 (SXGA)			
Brightness	Typical 200 cd/m ² (58 fL)			
Contrast ratio	500:1			
Vibration		Standard	Level I	Level II
	SHIPS	MIL-STD-167-1 Type 1	MIL-STD-167-1 Type 1	
	AIRBORN	2gMIL-E-5400T Fig.2, curve IIa (sheet 2 of 3)	2gMIL-E-5400T Fig.3, curve IIa (sheet 2 of 3)	5gMIL-E-5400T Fig.3, curve IIIa (sheet 2 of 3)
Shock	Standard	Level I	Level II	
	MIL-STD-810	MIL-STD-901D	MIL-STD-810	
	Meth. 516.2	Lightweight	Meth. 516.2	
	30g - 12.5ms Half sine - X,Y,Z axis	Grade A	40g - 16ms half sine	
Operational temperature	Standard	Level I	Level II	
	Low temp: 0°C	Low temp: -25°C	Low temp: -40°C	
	High temp: +50°C	High temp: +55°C	High temp: +55°C	
Storage temperature	Standard	Level I	Level II	
	Low temp: -40°C	Low temp: -40°C	Low temp: -40°C	
	High temp: +70°C	High temp: +70°C	High temp: +70°C	
Relative humidity	Standard	Level I	Level II	
	max. 95% @ 40°C	max. 95% @ 40°C	max. 95% @ 40°C	
Ingress protection	Standard	Level I	Level II	
	IP65 on console level	IP65 on unit level with optional military interface box	IP65 on unit level with optional military interface box	
Drip proof	Standard	Level I	Level II	
	MIL-STD-810Fmeth. 506.4 proc III			
Altitude low pressure	Standard	Level I	Level II	
	20000ft (425 mbar)	20000ft (425 mbar)	40000ft (187 mbar)	
EMI / EMC	Standard	Level I	Level II	
	MIL-STD-461 E - NAVY Applications	MIL-STD-461 E - NAVY Applications	MIL-STD-461 E - Navy fixed and Airforce Applications	
FCC	Standard	Level I	Level II	
	FCC-A	FCC-A	FCC-A	
Signal inputs	DVI-I, VGA			
RS-232 serial port	9 pin sub D			
Power	9W4 sub D			
Controls	UP / DOWN / SEL / QUIT / STANDBY In conjunction with OSD			
Indicators	Green 'Power' LED, Red 'Fault' LED			

OSD	On-Screen Display
Power supply	Standard 12V & 28V DC, Optional: 115-220V AC as external module
Guidelines	MIL-STD-704E
Power consumption	80 W
Weight	7.9 kg
Finishing	Black RAL 9005
MTRR	Less than 30 minutes
Scaling modes	No scaling/full screen/keep aspect AutoSet, Automatic Phase Adjust (APA), Automatic Gain Control (AGC)
Options	LCD Flicker Compensation (special configuration) Low latency Touch screen